

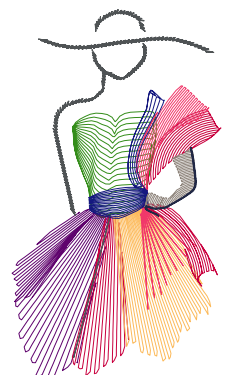
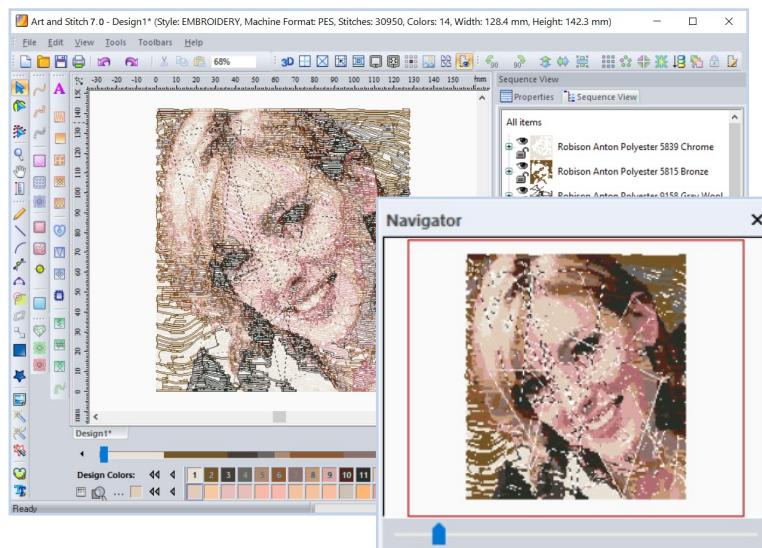
# Version History

April 2021

New in Art and Stitch PLUS Version 7

## Art and Stitch

*Loes van der Heijden*





# ART AND STITCH

Version 7.0, Build 3756

## New in Version 7.0 - Build 3756 - April 2021

### Art and Stitch PLUS: for longarm quilting AND machine embroidery

More and more longarm quilt systems can handle true embroidery designs nowadays, which makes the Art and Stitch PLUS Level no longer “just” for machine embroidery.

This new Version 7 is an Art and Stitch PLUS exclusive. No changes were made in Art and Stitch BASE.

The last version of Art and Stitch BASE is and stays version 5: our BASE level is “ready” - all functions we ever wanted to be inside our BASE level are in Version 5.

New changes and new functions go exclusively into Art and Stitch PLUS level, like the functions listed in this Version history. Therefore if you ever considered stepping up from BASE to our PLUS level... now is the time!

In Version 7 we have introduced three new functions:

Font Creator - a font-mapping program.

Photo-Stitch Color (for embroidery machines).

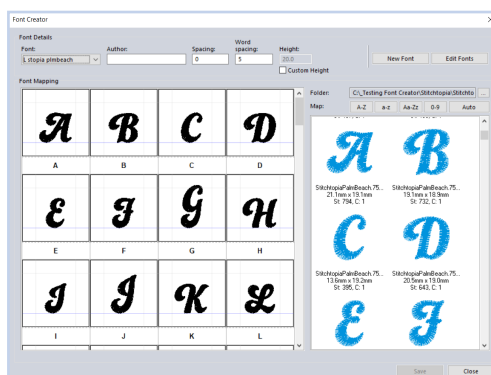
Photo-Stitch monochrome (for Longarm systems).

### Font Creator User Guide ADVANCED, Part i

Font Creator, introduced in Art and Stitch PLUS version 7, is a “font mapping” program, a tool that allows our users to combine purchased embroidery alphabets into a keyboard Font to be used with the Text/Lettering tool.

When purchasing an embroidery alphabet you will receive a folder with all letters of the alphabet, lower case, CAPS, special characters etc. To use that alphabet you would need to import the characters one by one and then place the letters at the desired locations to form the text.

With Font Creator it is just a one time import session to combine all available characters of the purchased alphabet into one font style = Font Mapping. Then the font will be listed in the available digitized font styles and you can use it over and over again by just typing the desired text.



*Drag and drop the characters into the right fields to turn a purchased embroidery alphabet into a keyboard font*



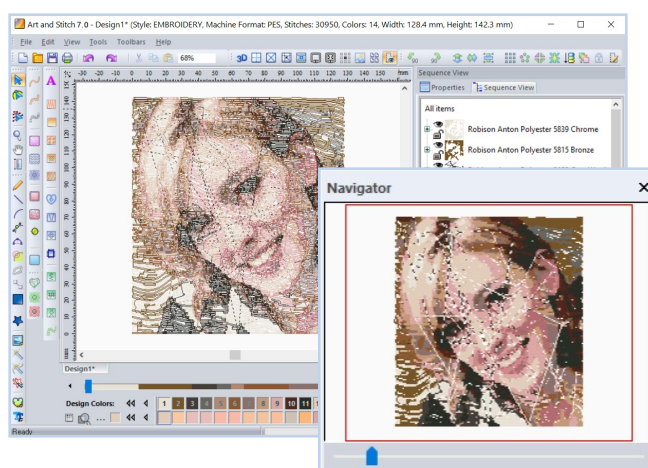
## Version History

# ART AND STITCH

New in Version 7.0 - Build 3756 - April 2021 - cont'd

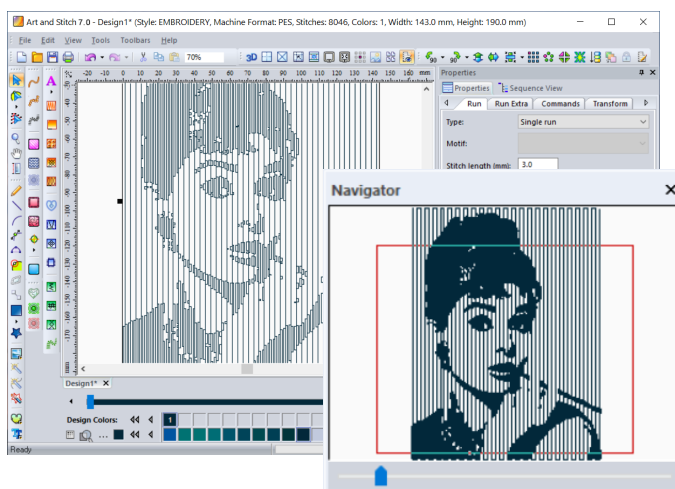
## Photo-Stitch for embroidery machines (Color) User Guide ADVANCED, Part J

Photo-Stitch comes in two different types: one for color photos and one for monochrome pictures (one color). Each type has a different look and feel. Both types can be used for embroidery machines. For longarm quilting the monochrome type will work best.



## Photo-Stitch for longarm systems (Monochrome) User Guide ADVANCED, Part K

As this type of Photo-Stitch consists of one continuous line it is suitable for longarm quilting. So much fun to turn a black/white photo of your favorite hero and stitch it on a pillow case!





# ART AND STITCH

New in Version 7.0 - Build 3756 - April 2021 - cont'd


## User Guide **ADVANCED** has been updated to version 7


Extra Parts/Chapters have been added for each of the new functions. No changes were made in the existing Parts/Chapters, except for their Part number/letter:

The "Addendum" with Font Information has changed from an Addendum into Part H.

The original Part H "Editing Embroidery Designs" has been moved to be the "Last Part" and will from now on stay the Last (but not least) Part.

Below you can see the last page of the Table of Contents of the previous version and the new Table of Contents of Version 7.

 <i>User Guide for Art and Stitch Plus</i> Book 2 - Advanced Digitizing		Introduction
<i>Table of Contents Book 2 - Advanced Digitizing</i>		
PART H - Editing Embroidery Designs.....	1	
H.1 Introduction - about file formats and source formats.....	2	
H.2 Changing sewing sequence and colors in an existing design.....	3	
H.3 Resizing designs not made with Art and Stitch.....	4	
H.4 Stitch Edit Mode.....	6	
H.5 Stitch Edit Ideas.....	9	
H.6 Combining multiple designs.....	10	
H.7 Using embroidery designs on a longarm system.....	11	
H.8 Design too big? Menu Tools > Split Wizard.....	12	
H.9 Split Wizard for Multi Position Hoops.....	15	
H.10 Create a Color Palette (Custom Thread Chart).....	17	
H.11 Special palette "Design Colors" - find a match with your favorite chart.....	19	
ADDENDUM: Font Information.....	1	
1. Samples of included digitized fonts.....	2	
2. Samples of included special fonts: Appliqué Fonts.....	12	
3. Fonts in Art and Stitch PLUS suitable for Longarm Quilting.....	13	
4. Available Monogram styles.....	14	

 <i>User Guide for Art and Stitch Plus</i> Book 2 - Advanced Digitizing		Introduction
<i>Table of Contents Book 2 - Advanced Digitizing</i>		
PART H - Font Information.....	1	
H.1 Samples of included digitized fonts.....	2	
H.2 Samples of included special fonts: Appliqué Fonts.....	12	
H.3 Fonts in Art and Stitch PLUS suitable for Longarm Quilting.....	13	
H.4 Available Monogram styles.....	14	
PART I - Font Creator.....	1	
i.1 Introduction to Font Creator.....	2	
i.2 Font Creator First Steps.....	2	
i.3 Font Mapping.....	3	
i.4 Tips.....	4	
i.5 Remove, Rename, Edit Fonts mapped with Font Creator.....	5	
i.6 Using the mapped font.....	6	
PART J - Photo-Stitch Color.....	1	
J.1 Introduction to the Photo-Stitch Wizard.....	2	
J.2 Photo-Stitch Wizard Step by Step.....	3	
PART K - Photo-Stitch Mono (Longarm).....	1	
K.1 Introduction to Photo-Stitch Wizard (Longarm).....	2	
K.2 Photo-Stitch Wizard (Longarm) Step by Step.....	3	
LAST PART - Editing Embroidery Designs.....	1	
L.1 Introduction - about file formats and source formats.....	2	
L.2 Changing sewing sequence and colors in an existing design.....	3	
L.3 Resizing designs not made with Art and Stitch.....	4	
L.4 Stitch Edit Mode.....	6	
L.5 Stitch Edit Ideas.....	9	
L.6 Combining multiple designs.....	10	
L.7 Using embroidery designs on a longarm system.....	11	
L.8 Design too big? Menu Tools > Split Wizard.....	12	
L.9 Split Wizard for Multi Position Hoops.....	15	
L.10 Create a Color Palette (Custom Thread Chart).....	17	
L.11 Special palette "Design Colors" - find a match with your favorite chart.....	19	

*Extra chapters were added for the new functions  
but no other changes were made in the existing  
User Guide **ADVANCED**.*